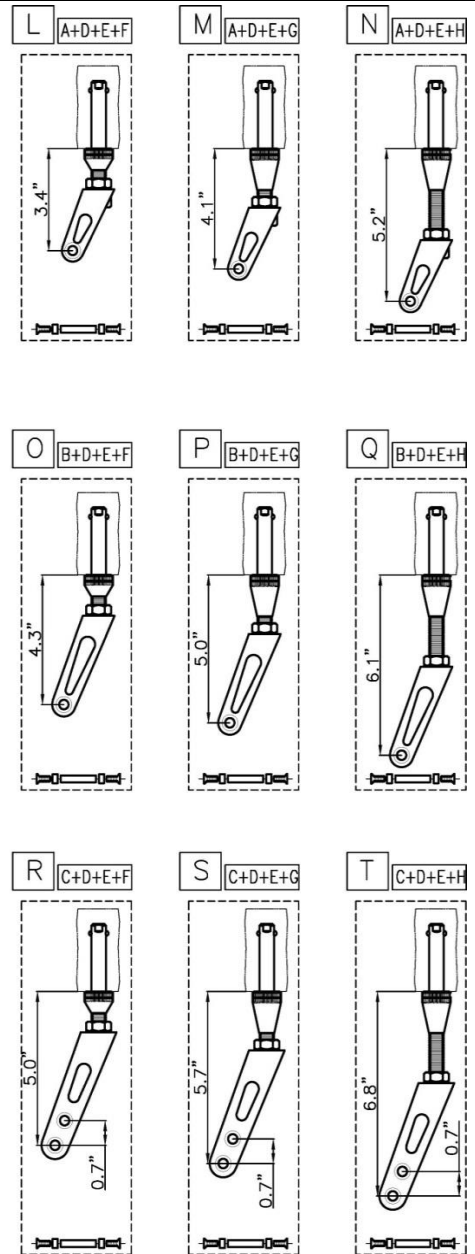
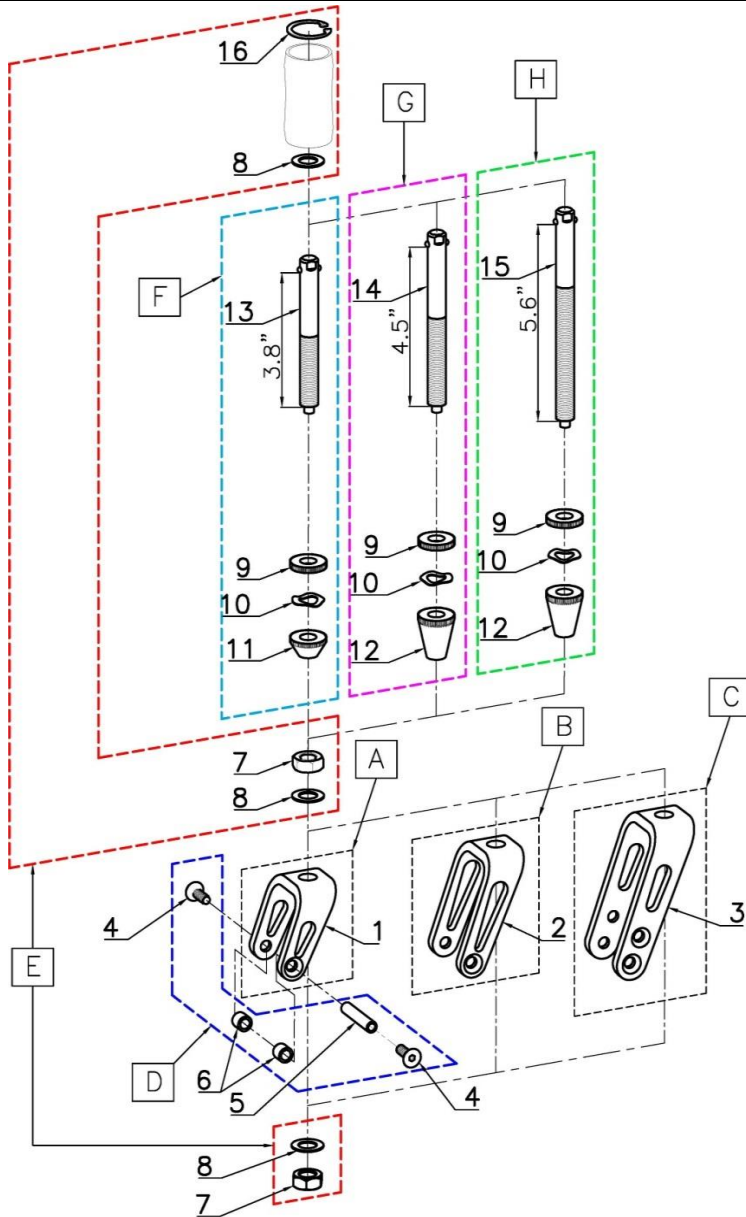


CASTER FORK w / Quick Release Axle

COLOURS
IN MOTION

Ver. 1 01/01/23

Section 1600



POS	Assy #	#	Parts #	QTY	Color	Remark	MSRP	NOTE
A	-	1	0307-400	1	Blk	Short	per 1pcs	2pcs/chair
B	-	2	0307-401	1	Blk	Med	per 1pcs	2pcs/chair
C	-	3	0307-403	1	Blk	Long	per 1pcs	2pcs/chair
D	1400-01D	4	0620-400	2	Sil	1/4"-28 L:3/4 SFHCS	per set	2sets/chair
		5	0605-300	1	Sil	Front Caster Axle		
		6	0257-300	2	Sil	3/8" L:1/4" Spacer		
E	1600-01E	7	0121-300	2	Sil	1/2" -20 HN	per set	2sets/chair
		8	0119-300	3	Sil	1/2" thin Washer		
F	1600-01F	16	0274-300	1	Blk	Snap Ring	per set	2sets/chair
		9	0122-300	1	Blk	Knurl Nut - Small		
		10	0120-300	1	Sil	1/2" thin Wavy Washer		
		11	0123-400	1	Blk	Knurl Nut - Medium		
G	1600-01G	13	0012-302	1	-	Small Q.R. Axle	per set	2sets/chair
		9	0122-300	1	Blk	Knurl Nut - Small		
		10	0120-300	1	Sil	1/2" thin Wavy Washer		
H	1600-01H	12	0123-300	1	Blk	Knurl Nut - Tall	per set	2sets/chair
		14	0012-303	1	-	Medium Q.R. Axle		
		9	0122-300	1	Blk	Knurl Nut - Small		
H	1600-01H	10	0120-300	1	Sil	1/2" thin Wavy Washer	per set	2sets/chair
		12	0123-300	1	Blk	Knurl Nut - Tall		
		15	0012-304	1	-	Long Q.R. Axle		

POS	Assy #	#	Parts #	QTY	Color	Remark	MSRP	Note
L	1600-01L	-	-	1set	-	Short Fork & Short Q.R. Axle	per set	2sets/chair
M	1600-01M	-	-	1set	-	Short Fork & Med Q.R. Axle	per set	2sets/chair
N	1600-01N	-	-	1set	-	Short Fork & Long Q.R. Axle	per set	2sets/chair
O	1600-01O	-	-	1set	-	Med Fork & Short Q.R. Axle	per set	2sets/chair
P	1600-01P	-	-	1set	-	Med Fork & Med Q.R. Axle	per set	2sets/chair
Q	1600-01Q	-	-	1set	-	Med Fork & Long Q.R. Axle	per set	2sets/chair
R	1600-01R	-	-	1set	-	Long Fork & Short Q.R. Axle	per set	2sets/chair
S	1600-01S	-	-	1set	-	Long Fork & Med Q.R. Axle	per set	2sets/chair
T	1600-01T	-	-	1set	-	Long Fork & Long Q.R. Axle	per set	2sets/chair